



El Dorado County Fire Protection District



Station 25 Run Statistics August 2024

ENGINE 25: 252 Total Calls

- Medical Aid- 171
- Fire- 16
- Traffic Collision- 17
- Public Assist - 24
- Misc. – 23
- Move/Cover– 1

MEDIC 25: 268 Total Calls

- Medical Aid- 212
- Fire- 8
- Traffic Collision- 13
- Transfer -12
- Misc.- 4
- Move/Cover - 19



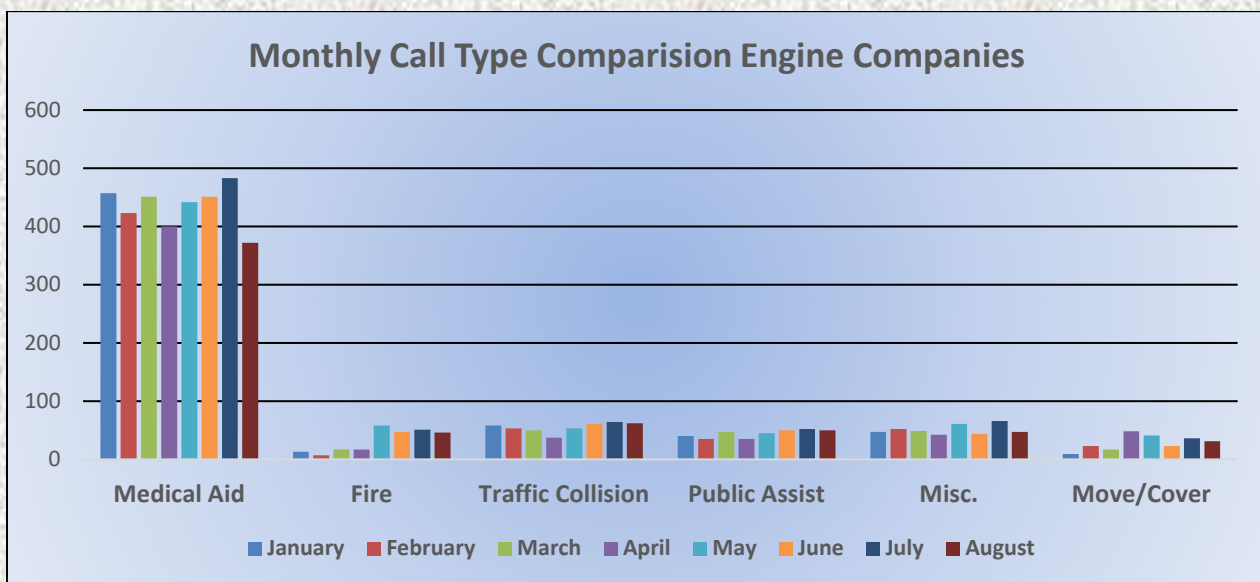
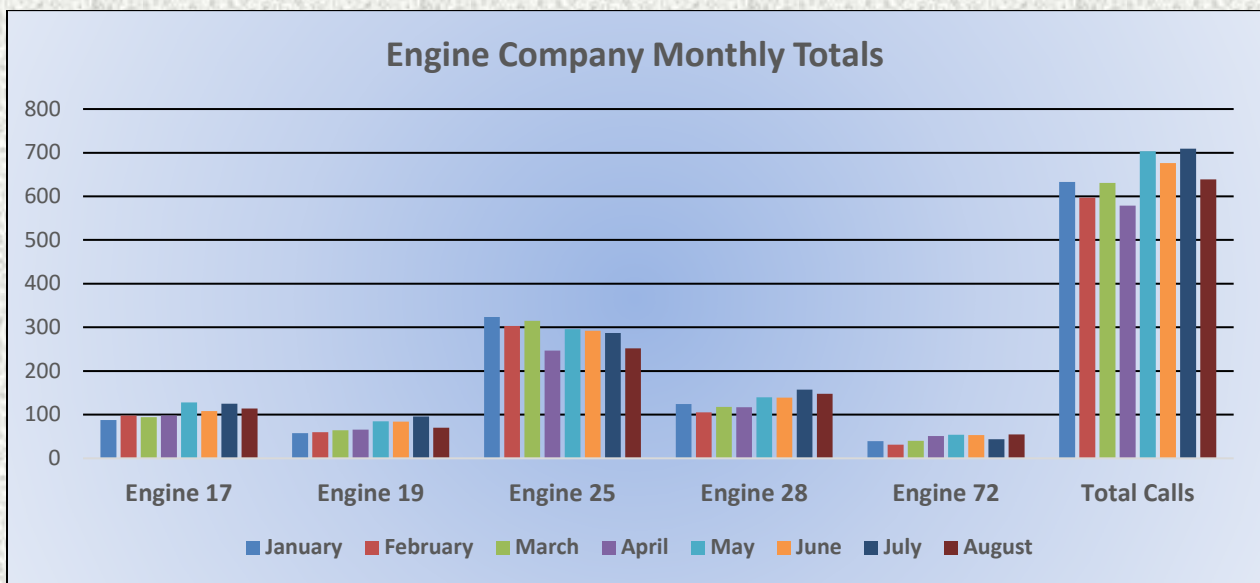


El Dorado County Fire Protection District



Monthly Run Statistics and Call Break Down August 2024 Engine Companies and Medic Units

Total Responses for Engine Companies: 639

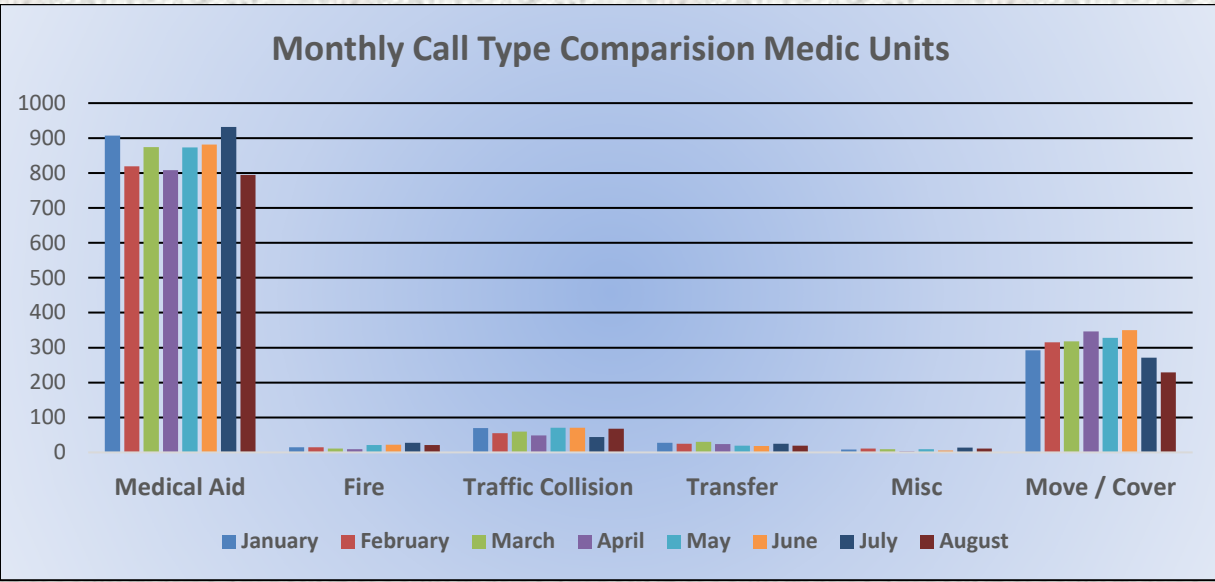
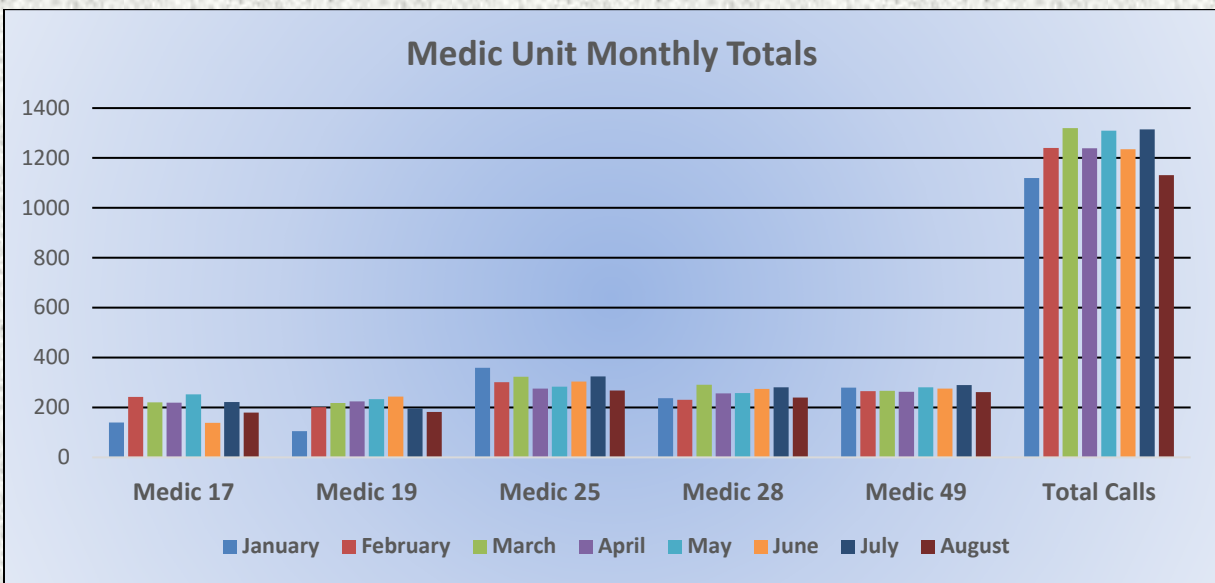




El Dorado County Fire Protection District

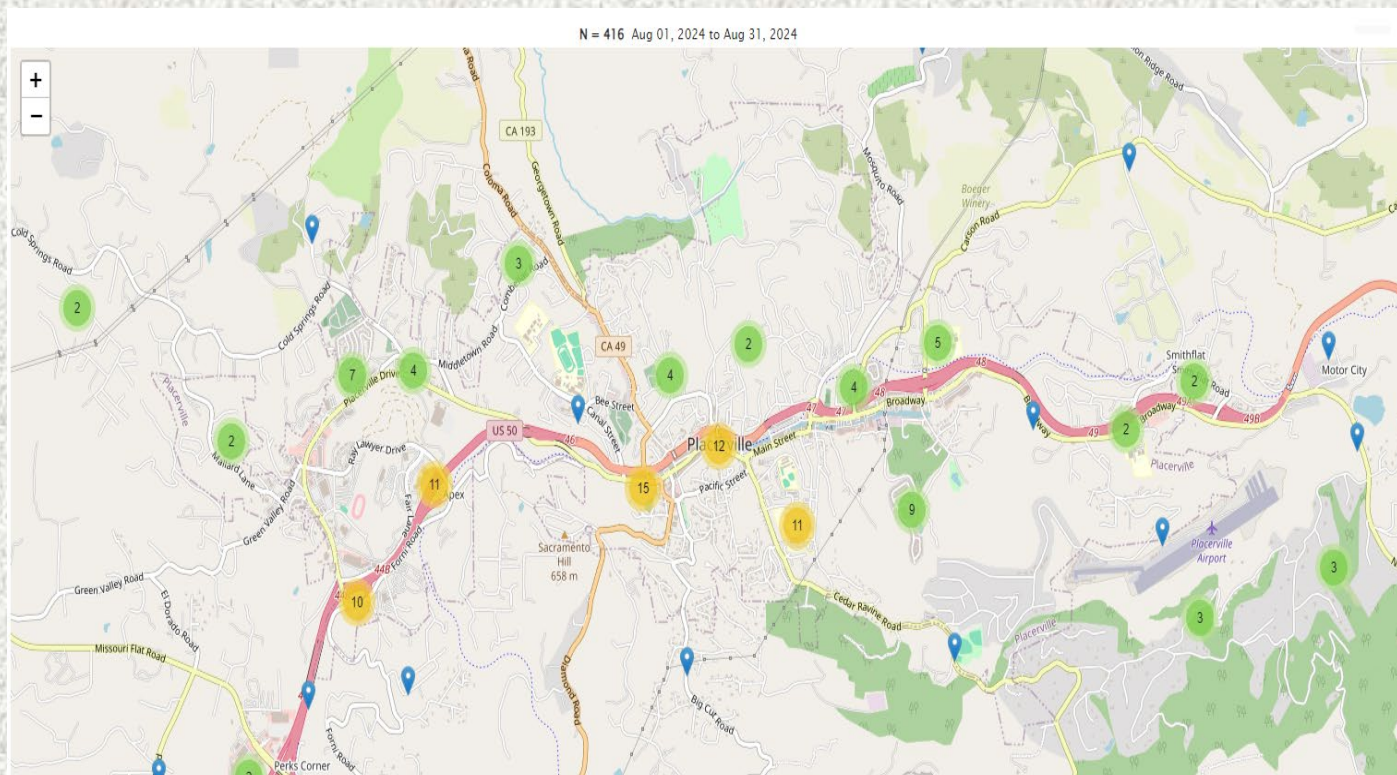


Total Responses for Medic Units: 1,131





Engine 25 Call Volume and Locations August 2024





Medic 25 Monthly Statistics Comparison

